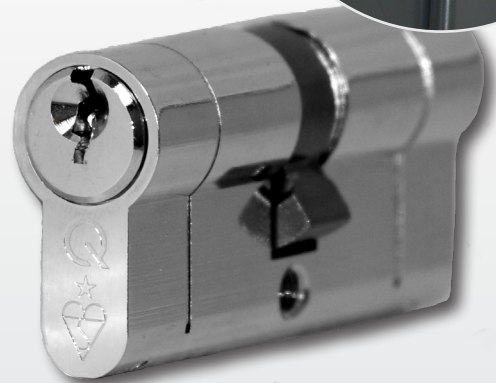


# PRODUCT BULLETIN

## greenteQ Q-Star Profile Cylinder



greenteQ

### greenteQ Q-Star Profile Cylinder

greenteQ Q-Star is a TS007:2014 1-star rated profile cylinder.

It is a premium quality product that features effective protection against bumping, picking and drilling, and is designed to be used with a TS007 2 star door handle to provide full 3 star protection.

Unlike some cylinders, both sides of Q-Star include all the security features, which means that a fabricator needs to stock just one product, regardless of whether the cylinder is being fitted to an inward or outward opening door.

Both sides feature a sacrificial break point to hamper attempts to gain entry by snapping the cylinder. The key will still operate the cylinder after snapping at these points.

Both ends are marked with the greenteQ 'Q' mark, the kitemark logo and a star to clearly denote it as a TS007 1 star approved cylinder. The side of the cylinder is also stamped TS007:2014 and with the VBH item number to further aid identification.

Each cylinder is supplied with 3 Q-branded keys.

Q-Star is approved by Secured by Design as a Police Preferred Specification.

#### Benefits at a glance:

- Both ends feature specially designed tumblers and hardened pins to protect against bumping, picking and drilling
- Sacrificial break points to hamper attempts to snap and remove the cylinder
- TS007:2014 approved with 1 star classification
- Fit with an accredited 2 star handle for full 3 star protection
- EN1303 classification 16000C52
- Clearly identified as a TS007 1 star cylinder
- Clearly stamped with the BSI logo
- Visual deterrent on cylinder ends
- Non-handed as cylinder is protected on both ends
- 10 year greenteQ mechanical guarantee
- Secured by Design approved product



# Q-Star Profile Cylinder greenteQ

## VBH Order Codes

### Key/Key Double Cylinder c/w 3 Keys

Size	Nickel	Brass	Box Qty
32/32	2QCY1001	-	10
32/40	2QCY1005	-	10
32/45	2QCY1007	-	10
32/50	2QCY1009	-	10
32/60	2QCY1013	-	10
32/70	2QCY1059	-	10
35/35	2QCY1015	2QCY1016	10
35/40	2QCY1017	-	10
35/45	2QCY1019	2QCY1020	10
35/50	2QCY1021	-	10
35/55	2QCY1023	2QCY1024	10
35/60	2QCY1025	-	10
40/40	2QCY1027	2QCY1028	10
40/45	2QCY1029	2QCY1030	10
40/50	2QCY1031	2QCY1032	10
40/55	2QCY1033	2QCY1034	10
40/60	2QCY1035	2QCY1036	10
45/45	2QCY1037	2QCY1038	10
45/50	2QCY1039	2QCY1040	10
45/55	2QCY1041	2QCY1042	10
45/60	2QCY1043	-	10
50/50	2QCY1045	2QCY1046	10

### Thumb Turn/Key Double Cylinders c/w 3 Keys

K denotes thumb-turn (Knob) side

Size	Nickel	Brass	Box Qty
K32/32	2QCY1701	-	10
K35/35	2QCY1715	2QCY1716	10
K35/55	2QCY1723	-	10
K40/40	2QCY1727	2QCY1728	10
K40/45	2QCY1729	-	10
K40/50	2QCY1731	2QCY1732	10
K40/55	2QCY1733	2QCY1734	10
K40/60	2QCY1735	-	10
K45/40	2QCY1829	-	10
K45/45	2QCY1737	2QCY1738	10
K45/50	2QCY1739	2QCY1740	10
K45/55	2QCY1741	2QCY1742	10
K50/40	2QCY1831	2QCY1832	10
K50/45	2QCY1839	2QCY1840	10
K50/50	2QCY1745	2QCY1746	10
K55/40	2QCY1833	2QCY1834	10
K55/45	2QCY1841	2QCY1842	10
K60/40	2QCY1835	-	10
K65/32	2QCY1855	-	10

### Keyed Alike Pairs (2 Double Cylinders c/w 6 keys)

Size	Nickel	Brass	Box Qty
32/45	2QCY1507	-	5 Pr
32/50	2QCY1509	-	5 Pr
35/35	2QCY1515	2QCY1516	5 Pr
35/50	2QCY1521	-	5 Pr
40/40	2QCY1527	-	5 Pr
40/45	2QCY1529	-	5 Pr
40/50	2QCY1539	2QCY1540	5 Pr
40/55	2QCY1533	-	5 Pr
45/45	2QCY1537	2QCY1538	5 Pr
45/50	2QCY1531	2QCY1532	5 Pr
45/55	2QCY1541	2QCY1542	5 Pr
50/50	2QCY1545	2QCY1546	5 Pr

### Key Blank

Description	VBH Code	Box Qty
Key Blank	2QCY0051	1